

Cylinder pressure regulator HP 150

- single stage for high flow and high outlet pressure (up to 50bar) – with a balanced poppet



Fittings optional

Description:

The cylinder pressure regulator HP 150 is a single stage pressure regulator with a high flow rate and is developed for pressure reduction of high purity gases.

It reduces the pressure of compressed gas or fluids at a maximum outlet pressure of 50 bar.

The integrated balanced poppet ensures that even when inlet pressure drops down, a constant operating pressure is guaranteed (dual stage effect).

The cylinder pressure regulator is fitted as a standard with gas specific connections to DIN 477 or any other common national standard.

Application Area:

Especially for gases with high requirements on purity up to 6.0 and for laboratories and analytics. In case of our special cleaning method the cylinder pressure regulator is ECD capable.

Technical Details:

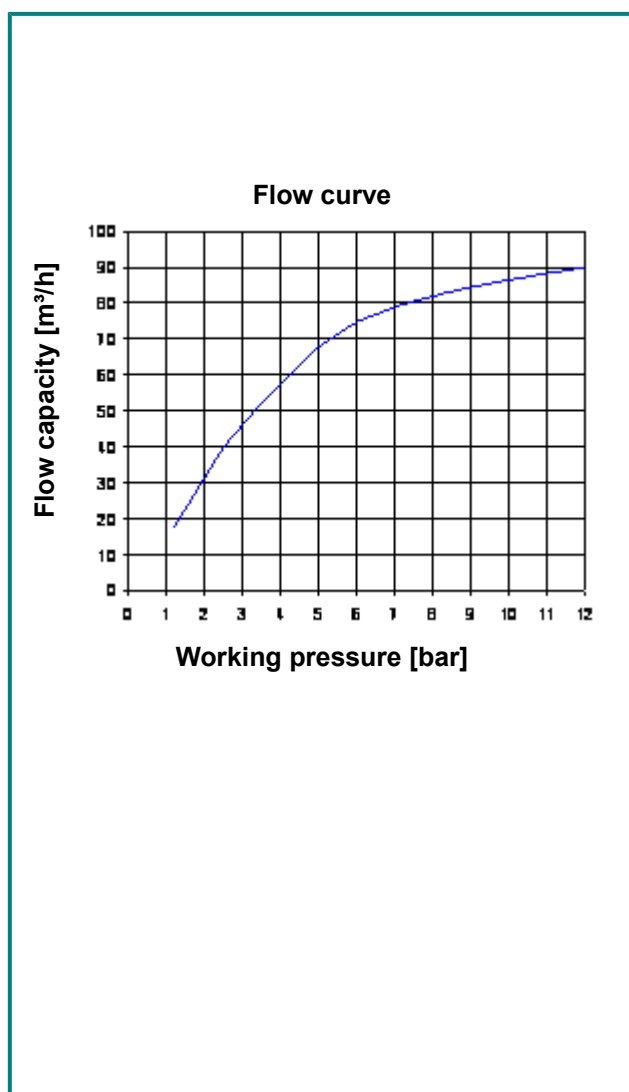
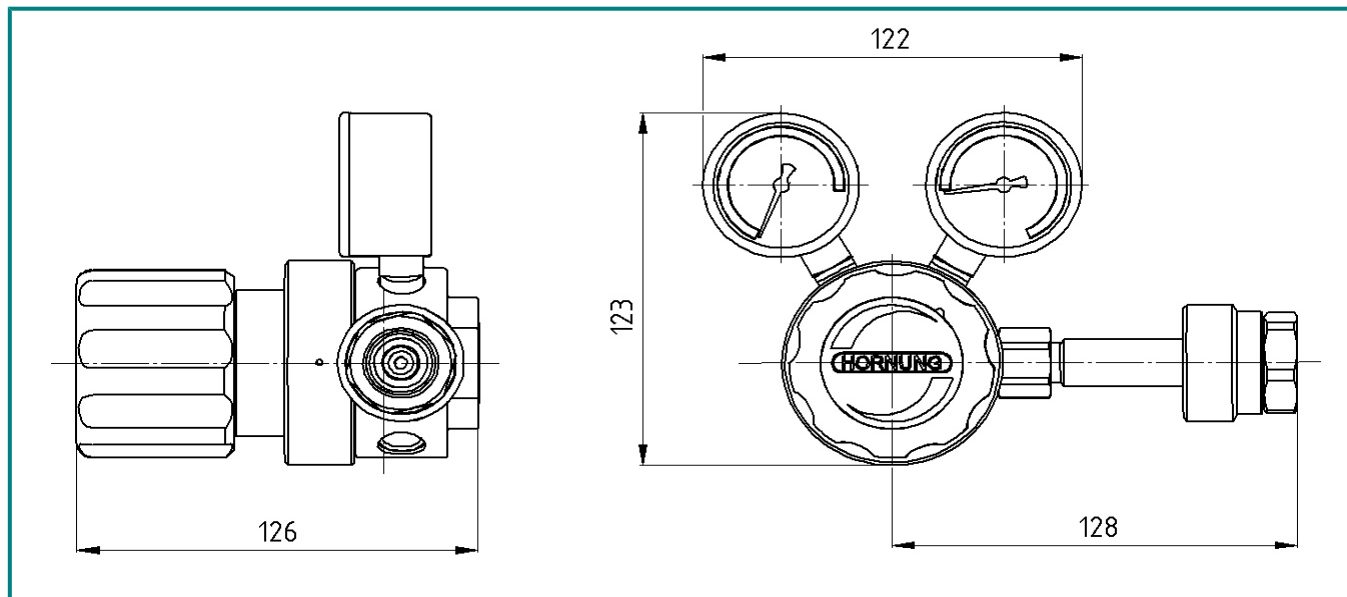
Body:	stainless steel 1.4404 electro polished brass, nickel and matt chrome plated
Seat:	PCTFE
Diaphragm:	1.4435
Leakage rate:	10^{-8} (mbar l/s) He
Gas purity:	≤ 6.0
Max.inlet pressure:	300 bar
Outlet pressure ranges:	0.1-1.7; 1-3.5; 1-7; 1-12; 1-17; 1-50 bar
Operating temp.:	-20°C to +70°C
Gauges:	safety version to EN 837-1 KL1,6
Size (WxHxD):	189 x 123 x 126 mm
Weight:	1980g

Hornung Quality standard

The company Hornung is certified to
ISO 9001:2008 and ISO 14001:2009.

All single parts are manufactured, assembled
and tested by in-house production.

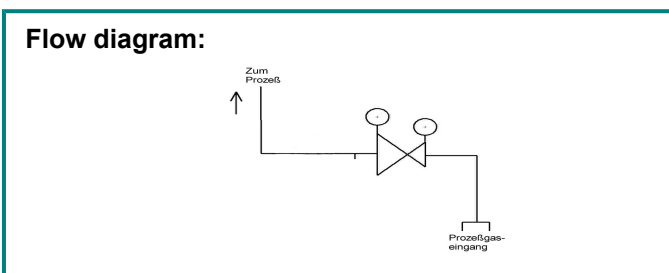
The finished parts are therefore under the criteria
of our German quality control system with 100%
final inspection.



Accessories:

See catalogue segment

7. Accessories
Screw connection



Ordering information:

Material:

- 1 = stainless steel
- 2 = brass

Inlet pressure:

- 0 = other
- 1 = 200 bar
- 2 = 300 bar

Outlet pressure ranges:

- 1 = 0.1 - 1.7 bar
- 2 = 1 - 3.5 bar
- 3 = 1 - 7 bar
- 4 = 1 - 12 bar
- 5 = 1 - 17 bar
- 6 = 1 - 50 bar

Options for the outlet:

- 0 = NPT 3/8" f
- 6 = compression fitting 6mm
- 8 = compression fitting 8mm
- 10 = compression fitting 10mm
- 12 = compression fitting 12mm
- 15 = compression fitting 15mm

72-	1	1	2	6	Gas
Type	Mat.	inlet pressure	outlet	option	gastype